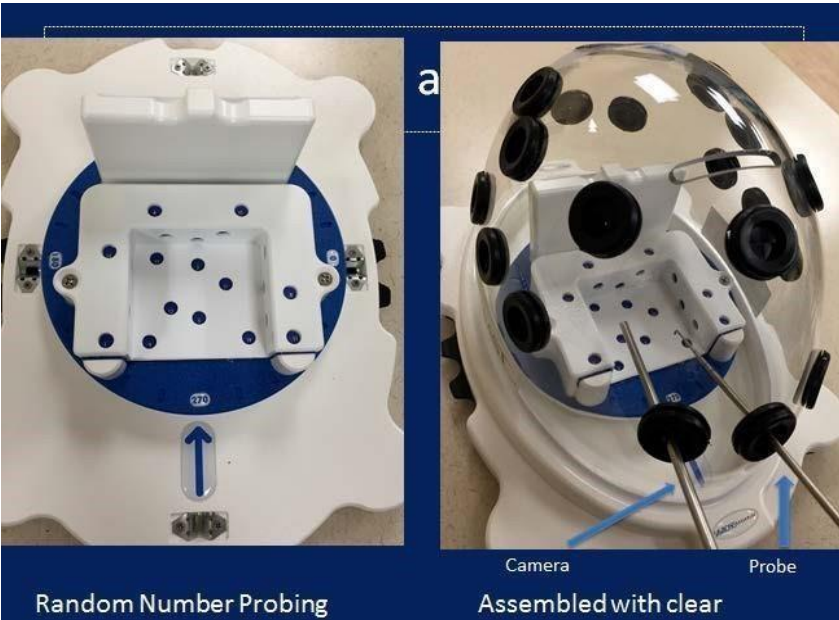
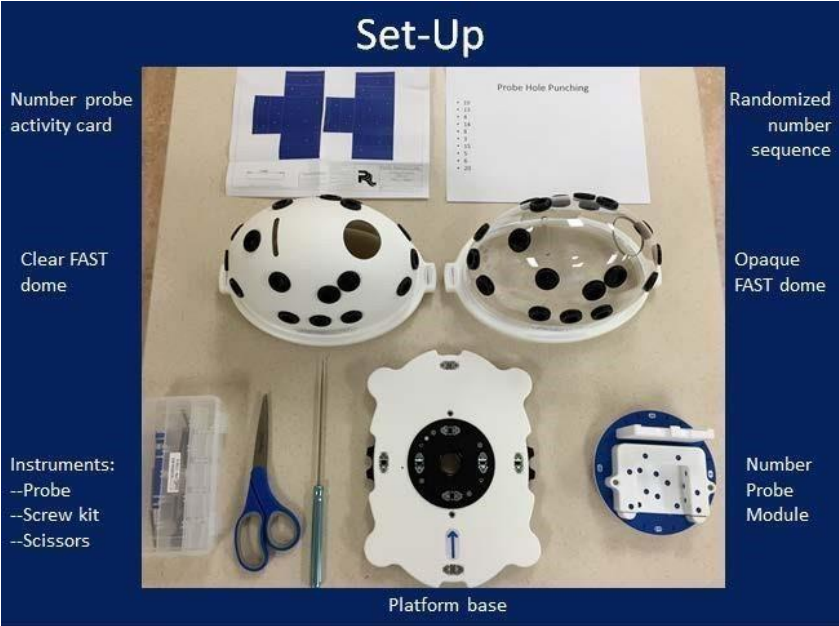


**Module 2 Instructions**

1. Use the FAST probing module. Align the arrow on the baseplate with the 270 position on the module.
2. To generate a list of 10 random numbers, go to the random generator page linked below:  
<https://www.random.org/integers/?num=200&min=1&max=20&col=10&base=10&format=html&rnd=new>
3. If necessary, replace probe activity card. If you require instruction on how to place the card successfully see the accompanying video



**Random Number Probing**

Using your LEFT hand, place the camera in the central left portal. Place the probe in the center portal. Probe and punch the 10 numbers listed on the random number sequence. Perform the amount of trials necessary to complete the task in less than 146 seconds. Repeat the task with the camera in your RIGHT hand. Use the accompanying data sheet to record the time for each trial as well as the number of trials to reach the benchmark.